

ENERGY MAX

Better Anti-Tamper Performance

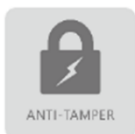


EMS12M

Single Phase Electronic Energy Meter



HIGH ACCURACY



ANTI-TAMPER



LARGE LCD
DISPLAY

- ❖ Ultra Anti -Tamper
- ❖ Large LCD Display
- ❖ Replaceable Battery

SPECIFICATIONS

Measurement

Compliance with: TIS 2543-2555

Connection type: 1P2W

Accuracy: Class 1.0 for active.

Voltage

Nominal voltage (Un): 230V

Operating range: 0.7Un ~ 1.2Un

Consumption:

Voltage circuit ≤ 2W, 10VA

Current circuit ≤ 2VA

Current

5(100) A

Frequency

50Hz ±2%

Real-time Clock

Accuracy within 1 seconds per day -40°C ~ +70°C

LCD Display

7 characters of 6segment display

Digital size: 7.6mm x 15.9mm

LCD display available without main power with backlight

Battery

Battery easy replaced

Voltage: 3.6V

Backup time: 15 years with power

Measured Values

Import/Export/Absolute/Net kWh

Import/Export/ kvarh

Instantaneous kW, kvar, kVA, Irms, Vrms, Frequency, Power factor

Maximum Demand

Maximum demand: kW, kvar

Block demand

Intervals 15 minutes

Event Logs

Tampering detection, power quality and general events

Configurable event alarming system

Load Profile

Up to 1 channels

Default internal period 15minutes

Communications

Local communication: Optical port 9600bps

Remote communication: Bluetooth module

Protocol: DLMS/COSEM

Environmental

Operating range limit: -40°C to +70°C

Storage range limit: -40°C to +85°C Relative

Relative humidity: ≤ 95%RH

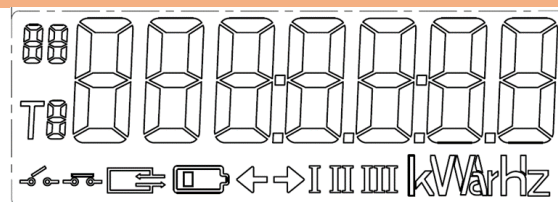
Ingress protection: IP54

Dimensions and Weight

Dimensions: 190.5mm 130mm 65mm

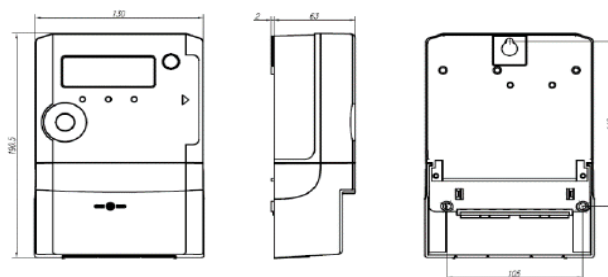
Weight: 0.6 kg

LCD INDICATION



Units: mm

METER DIMENSIONS



Units: mm

Energy Max Co., Ltd.

48/124-125,48/126-127 Moo 6, Bang kruai-sainoi Rd, Bangrakyai, Bangbuathong, Nonthaburi 11110

Tel. +66-2157-0740-2, Fax. +66-2157-0743, WWW.energymax.co.th

S-TS-153 Rev. B EFFECTIVE DATE : 28/08/2023