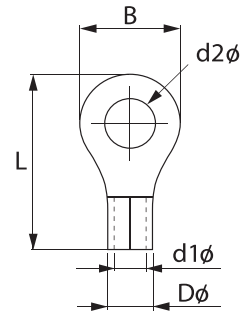


RING TERMINAL
หางปลาทอมปลี้อย
(R TYPE)
Material: Copper
Surface: Tin plated



Item No.	TIS Wire Size	DIMENSIONS (MM.)					AWG	DIN mm ²	Q'TY in box
		d2φ	B	L	Dφ	d1φ			
R 1.5-3	1.5	3.7	8.0	15.5	3.3	1.7	22-16	0.5-1.5	2,500
R 1.5-4		4.3							
R 1.5-5		5.3							
R 2.5-3	2.5	3.7	8.5	16.5	3.9	2.3	16-14	1.5-2.5	2,500
R 2.5-4		4.3							
R 2.5-5		5.3							
R 2.5-6		6.4							12.0
R 4-4	4	4.3	8.8	18.4	5.0	3.0	14-12	2.5-4	2,000
R 4-5		5.3							
R 4-6		6.4							
R 6-4	6	4.3	9.5	19.8	5.4	3.4	12-10	4-6	2,000
R 6-5		5.3							
R 6-6		6.4	12.0	23.0					1,000
R 6-8		8.4	15.0	27.5					
R 6-10		10.5							
R 10-6	10	6.4	12.0	23.8	6.9	4.5	8	10	1,000
R 10-8		8.4	15.0	30.0					800
R 10-10		10.5							
R 16-6	16	6.4	12.0	28.5	8.8	5.8	6	16	500
R 16-8		8.4	15.2	32.0					
R 16-10		10.5							
R 25-6	25	6.4	16.5	34.5	11.3	7.7	4	25	250
R 25-8		8.4							
R 25-10		10.5							
R 25-12		13.0	22.0	42.5					200
R 35-6	35	6.4	19.4	38.7	11.8	8.2	2	35	200
R 35-8		8.4							
R 35-10		10.5							
R 35-12		13.0							
R 50-8S	50	8.4	16.0	38.5	13.4	9.8	1/0	50	200
R 50-10S		10.5							
R 50-6		6.4	22.0	42.7					
R 50-8		8.4							
R 50-10		10.5							
R 50-12		13.0							
R 70-8	70	8.4	22.0	49.7	15.4	11.4	2/0	70	100
R 70-10		10.5							
R 70-12		13.0							
R 95-6	95	6.4	24.0	51.5	17.5	13.5	4/0	95	100
R 95-8		8.4							
R 95-10		10.5							
R 95-12		13.0							
R 120-8	120	8.4	27.0	54.4	19.4	15.0	250 MCM	120	50
R 120-10		10.5							
R 120-12		13.0							
R 120-14		15.0	32.0	68.5					
R 120-16		17.0							

Item No.	TIS Wire Size	DIMENSIONS (MM.)					AWG	DIN mm ²	Q'TY in box
		d2∅	B	L	D∅	d1∅			
R 150-6	150	6.4	28.5	56.0	22.0	16.8	250-300 MCM	150	50
R 150-8		8.4							
R 150-10		10.5							
R 150-12		13.0							
R 185-12	185	13.0	36.0	67.5	26.8	20.3	300-500 MCM	185	25
R 185-14		15.0							
R 185-16		17.0							
R 185-18		19.0		81.0					
R 185-20		21.0							
R 240-12	240	13.0	38.5	70.3	29.0	22.0	350-500 MCM	240	25
R 240-14		15.0							
R 240-16		17.0							
R 240-18		19.0		86.7					
R 240-20		21.0							
R 300-12	300	13.0	43.2	72.0	33.0	25.0	600 MCM	300	20
R 300-14		15.0							
R 300-16		17.0							
R 300-18		19.0		91.0					
R 300-20		21.0							
R 400-12	400	13.0	50.4	88.3	38.4	29.3	800 MCM	400	10
R 400-14		15.0							
R 400-16		17.0							
R 400-18		19.0		105.5					
R 400-20		21.0							

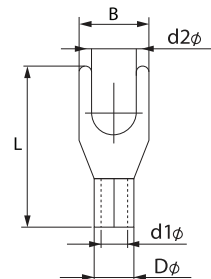
SPADE TERMINAL

หางปลาเอกป्लीย

(Y TYPE)

Material: ETP-Copper

Surface: Tin plated



Item No.	TIS Wire Size	DIMENSIONS (MM.)					AWG	DIN mm ²	Q'TY in box
		d2∅	B	L	D∅	d1∅			
Y 1.5-3S	1.5	3.3	5.7	16.0	3.3	1.7	22-16	0.5-1.5	2,500
Y 1.5-4S		4.3	6.4						
Y 1.5-5S		5.3	7.2						
Y 2.5-3S	2.5	3.3	5.7	16.0	3.9	2.3	16-14	1.5-2.5	2,500
Y 2.5-4S		4.3	6.4						
Y 2.5-5S		5.3	7.2						
Y 4-4	4	4.3	8.0	18.3	5.0	3.0	14-12	2.5-4	2,000
Y 4-5		5.3							
Y 6-4S	6	4.3	7.2	18.8	5.4	3.4	12-10	4-6	2,000
Y 6-5S		5.3	8.2						
Y 6-6		6.4	12.0	24.0					1,000